

版权所有 万世德©2014.09

VANTA™ 万世德

Intelligent Packaging Solution Expert

智能包装解决方案专家



低碳高效 万世德造

Low Carbon, High Efficiency  
Vanta Manufactures

广州市万世德智能装备科技有限公司  
Guangzhou Vanta Intelligent Equipment Technology Co.,Ltd

地址: 广州市花都区华兴工业区华兴东路3号 邮编: 510800  
Add: No.3 Huaxing East Road, Huaxing Industrial Area,  
Huadu District, Guangzhou 510800 China  
电话Tel: +86 20-66809333 传真Fax: 020-61807333  
邮箱E-mail: info@vanta.cn  
网址Web: http://www.vantapacking.com

服务热线Service Hotline:  
400-0086-020



VANTA营销网站



VANTA官方微信



# 目录

## CONTENT

关于万世德	02
Our Vanta	02
液态包装解决方案	03
Our Packaging Solution	03
水\前处理系统	05
Water \ pretreatment system	05
吹瓶机	07
PET Blow Molding Machine	07
灌装机	09
Filling Machine	09
吹灌旋一体机	11
Blowing, Filling, Capping Combi Block	11
贴标机	13
Labeling Machine	13
纸箱裹包机、热收缩膜包机	15
Wrap-around Case Packer, Shrink Wrapper	15
纸箱成型、封箱、装箱、卸箱机	17
Carton Erector, Sealer, Packer, Depacker	17
包装工业机器人	19
Sorting & Packing Robot	19
码/卸箱垛机	21
Palletizer	21
卸瓶/罐/箱垛机	23
Depalletizer	23
在线检测设备	25
Online Inspection Equipment	25
生产线输送系统	27
Conveying System	27
卓越品质	29
Excellent Quality	29
我们的荣誉	30
Our Honor	30
专业服务	31
Professional Service	31
我们的客户	32
Our Clients	32



# >> | 关于万世德 >> | Our Vanta

广州市万世德智能装备科技有限公司是国内领先的包装设备制造商、液态产品包装解决方案的提供商。

经过10多年的发展，万世德的产品线不断丰富。万世德能够为液态产品制造企业的生产线提供众多关键设备如：水处理、前处理、吹瓶机、灌装机、吹灌旋一体机、贴标机、二次包装设备：热收缩膜包装机、纸箱裹包机（直线式纸箱裹包机、跌落式纸箱裹包机、侧进式纸箱裹包机）、纸箱成型机：侧式开箱机（胶带、热熔胶）、立式开箱机（胶带、热熔胶）、封箱（胶带、热熔胶）、装箱（平移式装箱机、摇臂式装箱机、机器人装箱机）、分拣装箱（DELTA-2机器人装箱、DELTA-3 机器人装箱）、生产线前端自动化设备（卸箱垛机、卸瓶垛机、卸罐垛机）、生产线后端自动化设备（传统码垛机、机器人码垛）、输送系统。

此外，我们与国内、国际知名企业形成战略合作伙伴关系，互惠共赢、取长补短，

VANTA is a leading national packaging equipment manufacturer and intelligent packaging solutions expert.

After over ten years of development, VANTA has constantly enriched product line. VANTA can provide many high quality equipments for liquid production-manufacturing companies. Such as: PET bottle blowing machine, labeling machine, secondary packaging equipment, shrink wrapper, case packer (linear case packer, drop case packer, side case packer), carton erector(tape, hot melt adhesive), carton sealer(tape, hot melt glue), packer (packer, robot arm packer, robot packer), sorting (DELTA - 2 robot packer, DELTA - 3 robot packer), the production line Front-end automation equipment (case depalletizer, bottle depalletizer, other depalletizer), production line back-end automation equipment (traditional case palletizer, robot palletizer), conveying system.

In addition, we cooperate with domestic and international famous enterprises to the strategic partnerships. Committing provide the production and overall packaging solution project to liquid production enterprise.

饮料  
Beverage



啤酒  
Beer



瓶装水整线  
Bottled Water Line



食用油  
Edible Oil



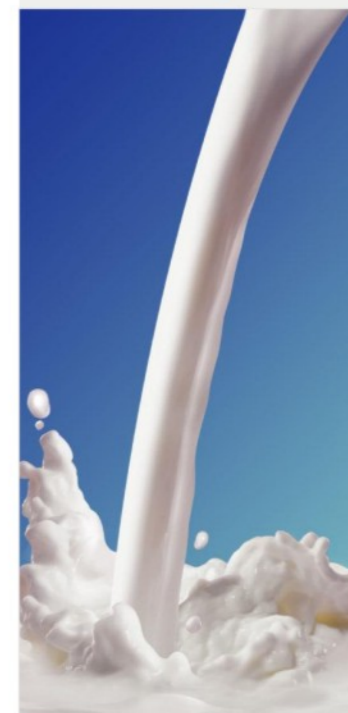
日化  
Daily Chemicals



调味品  
Condiment



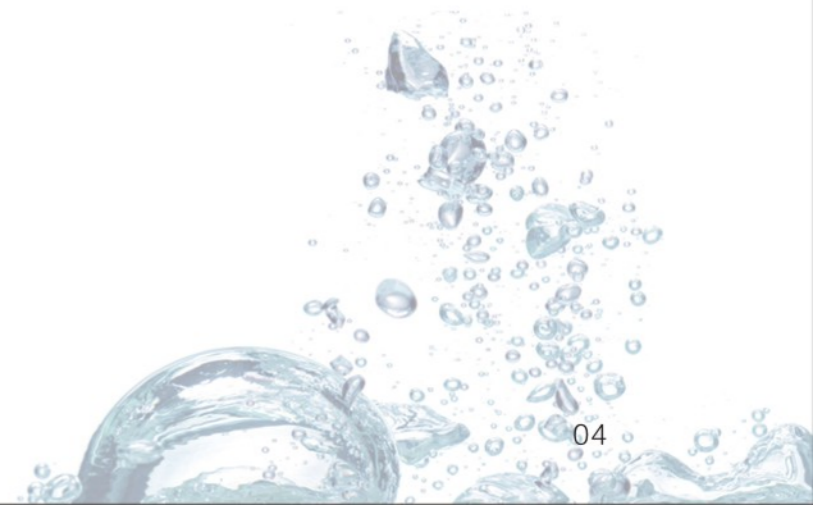
乳品  
Dairy



食品、医药  
Food & Pharmacy



# Liquid Packaging Solution 液态包装解决方案



# 水/前处理系统

## >> Water / Pretreatment System

### >> 砂滤及炭滤器 Sand Filter and Carbon Filter

采用不同的过滤介质，（石英砂、锰砂、或活性炭）处理水源水，净化及除去水中悬浮物、余氯、杂质、有机物和吸附异味。

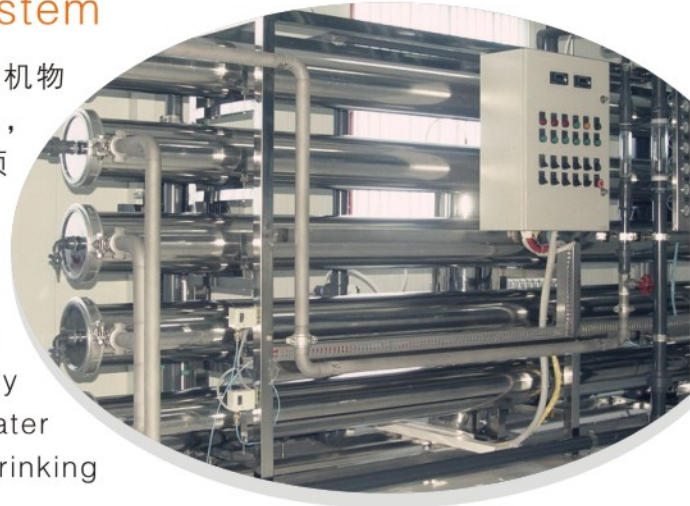
These two types of filter adopt different types of filtering media (Quartz Sand, Manganese, and Activated Carbon) to treat raw water to effectively purify and remove suspended solid pollutants, residual Cl<sup>-</sup>, impurities, and organics in water.



### >> 反渗透系统 Reverse Osmosis System

该装置依分子透析压差原理，将水中之无机盐，有机物杂菌等除去，达到纯化的目的。适用于，海水淡化，苦咸水淡化，饮用纯净水，蒸馏水制造，给水等领域。

Reverse osmosis (RO) is according to the molecular dialysis differential pressure principle. It is remove the inorganic salt, organic matter and infectious microbe from water. And which widely used in producing ultra-pure water, seawater desalination, brackish water desalination, drinking



### >> 纳滤系统 Nanofiltration System

纳滤，最常见用于处理总溶固较低的水，如地表水和地下水，其目的是去除水中阳离子，如天然有机物和有机合成物。广泛应用于食品加工，如乳制品加工和天然水制造等，

Nanofiltration is a relatively recent membrane filtration process used most often with low total dissolved solids water such as surface water and fresh groundwater, with the purpose of removing the kation from water, such as natural organic matter and synthetic organic matter. Nanofiltration is also becoming more widely used in food processing applications such as dairy processing and natural water manufacture.



### >> 超滤系统 Ultrafiltration System

当水通过超滤膜后，可将水中含有的大部分胶体硅除去，同时可去除大量的有机物等。可耐受高浓度的余氯和过氧化氢溶液，细菌，病毒去除率可达5log,产水浊度小于0.01NTU.

The system uses pollution-resistant, hydrophilic PES as its own building material, so it enjoys the advantage of longer lifetime, lighter weight, and compact structure. On top of that, it can withstand high density residual Cl<sup>-</sup>, H<sub>2</sub>O<sub>2</sub> solution. When it is used in treating bacteria and viruses, the killing rate could reach up to 5log. As a result, the water's turbidity is below 0.01UTU, well above American SWTR standard.

### >> 紫外光消毒杀菌器 UV Sterilizer

用以消除可能在储槽、管道中遗留在水中的细菌等为生物，以消灭饮水中细菌病毒，对高纯水、瓶装水等不会产生副作用。

It can kill bacteria and organics or residual bacteria and organics left by ion substitution. On top of that, it can exterminate bacteria in resin bed and bacteria and virus in drinking water. Most importantly, it will not cause any side effect when used in producing ultra-pure water, bottled water etc.



### >> CIP系统 CIP System

CIP(Clean In Place)清洗系统，被广泛的用于饮料、乳品、果汁、果浆、果酱、酒类等机械化程度较高的食品饮料生产企业中。采用冲洗水和洗涤剂溶液循环对罐、管道等设备进行清洗、消毒。

CIP (clean in place); it widely used in beverage, dairy, fruit juice, comfiture, jam, wine and food or beverage production enterprise with high mechanization degree. Adopt the rinse water and detergent to circulate cleaning and disinfecting for tin, pipeline equipment.



# >> 吹瓶机 PET Blow Molding Machine



PET塑料瓶不仅广泛用于包装碳酸饮料、饮用水、果汁和茶饮料等,是当今使用量最大的饮料包装,而且广泛用于食品、化工、药品包装等众多领域。

PET bottle is extensively used not only for packaging carbonated soft drink, drinking water, juice, and tea, but also for packaging food, chemicals, and medical products.



## >> 全自动直线式吹瓶机 Automatic Linear Blow Molding Machine



### 0.75L系列

模具从8至12个, 瓶子容量200ml-750ml  
冷灌速度: 6000-18000瓶/小时  
热灌速度: 3500-11000瓶/小时

### 1.5-2L系列

模具数量: 6-10个, 瓶子容量200ml-1500ml  
冷灌速度: 7000-13000瓶/小时  
热灌速度: 4200-8000瓶/小时

### 5L系列

模具数量: 1-6个, 瓶子容量200ml-5L  
冷灌: 600-4200瓶/小时

### 0.75L Series

Cavity amount from 8 to 12, bottle volume from 200ml to 750ml,  
Bottles for cold filling, capacity from 6000 to 18000 BPH  
Bottles for hot filling, capacity from 3500 to 11000 BPH

### 1.5-2L Series

Cavity amount from 6 to 10, bottle volume from 200ml to 1500ml  
When blowing bottles for cold filling, capacity from 7000 to 13000 BPH  
When blowing bottles for hot filling, capacity from 4200 to 8000 BPH

### 5L Series

Cavity amount from 1 to 6, bottle volume 200ml to 5L Series  
Blowing bottles for cold filling only, capacity from 600 to 4200 BPH

## >> 全自动旋转式吹瓶机 Automatic Rotary Blow Molding Machine

### 模腔数量6至24腔

0.5L: 冷灌装满足速度9000至36000瓶/小时的生产能力; 热灌装满足速度7200-28800瓶/小时  
1.5/2L: 冷灌装满足速度7000至24000瓶/小时的生产能力; 热灌装满足速度6000-20000瓶/小时

### 模腔数量2至6腔

5L: 满足速度1500至6000瓶/小时的生产能力

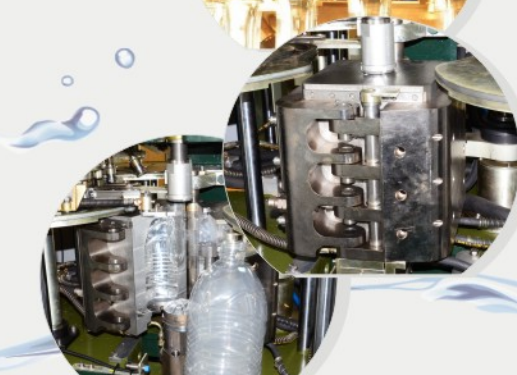
### Cavity amount from 6 to 24,

0.5L: Bottle for cold filling, capacity from 9000 to 36000 BPH; Bottle for hot filling, capacity from 7200 to 28800 BPH

1.5L and 2L: Bottle for cold filling, capacity from 7000 to 24000 BPH; Bottle for hot filling, capacity from 6000 to 20000 BPH

### Cavity amount from 2 to 6,

5L: Bottle for cold filling only, capacity from 1500 to 6000 BPH



# >> 灌装机 Filling Machine



适用于各种PET塑料瓶型，应用于碳酸饮料、饮用水、果汁、食用油、日化、浓稠酱等，而且广泛用于水、食品、化工等众多领域。  
Cooperating with other producers, Vanta can offer filling machine for drinking water, carbonated soft drink, juice, edible oil, daily chemicals, thick sauce and viscous liquid products.

## >> 水灌装 Water Filling

生产能力：3000-36000瓶/小时  
Capacity from 3000 to 36000 BPH



## >> 无菌冷灌装

### Aseptic Cold Filling

生产能力：8000-36000瓶/小时  
Capacity from 8000 to 36000 BPH



## >> 热灌装 Hot Filling

生产能力：3000-36000瓶/小时  
Capacity from 3000 to 36000 BPH



# >> 吹灌旋一体机

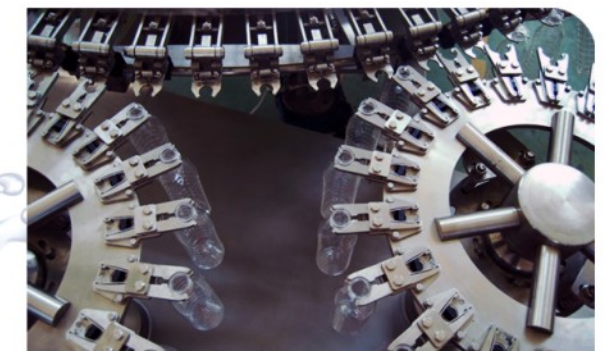
## >> Blowing, Filling, Capping Combi Block

单台设备上完成吹瓶、灌装、旋盖整个动作，高效率、低成本、低能耗优势，由吹灌旋一体机取代传统的吹瓶、灌装、旋盖单机分离的生产工艺将是食品包装机械行业的发展趋势。吹灌旋一体设备主要应用于矿泉水、果汁饮料、茶、碳酸饮料等。

产能：8000-36000瓶/小时

One single machine integrates blowing, filling, capping, which brings high efficiency, low operation cost, low energy consumption, superior cleanliness. Blowing, filling, capping combi block will take place of conventional grouping of machine, which consists of blowing machine and rinsing, filling, capping (3 in 1) mono block.

Capacity from 8000 to 36000 BPH





# >> 贴标机 Labeling Machine



应用于水、饮料、油脂、牛奶行业  
Application in water, beverage, oil, milk industry

## >> 回转式热溶胶贴标

### Rotary Roll Fed Labeler

产能：16000-36000瓶/小时  
Capacity from 16000 - 36000 BPH



产能：24000瓶/小时  
Capacity, 24000 BPH

### Self Adhesive Positioning Labeler

## >> 不干胶定位贴标

产能：8000瓶/小时  
Capacity, 8000 BPH  
5L or Big Bottle Labeler (Hot Melt Glue)

## >> 大瓶 (5L) 贴标



# >> 纸箱裹包机、热收缩膜包机 Wrap-around Case Packer, Shrink Wrapper



速度：15-80包/分钟  
Capacity: 15-80 packs per min.

>> 直线式纸包 In-line bottle feeding wrap around case packer



>> 纯膜包 Film only

速度：25-120包/分钟  
Capacity 25-120 packs per min.



速度：25-60包/分钟  
Capacity: 20 -60 packs per min.

>> 膜包+半托 Film with pad or tray



速度：25-120包/分钟  
Capacity: 25-120 packs per min.

>> 彩膜包 Printed film



# >> 纸箱成型、封箱、装箱、卸箱机 Carton Erector, Sealer, Packer, Depacker



## >> 成型、封箱 Carton Erector, Sealer

速度：25、35、45、60、80、120包/分钟(胶带、热熔胶)  
Capacity: 25, 35, 45, 60, 80, 120 packs per min.



## >> 抓取式装箱 Pick and Place Packer

产能：14400-48000瓶/小时  
Capacity: 14400-48000 BPH

## >> 跌落式装箱 Drop down case packer

产能：13-15箱/分  
Capacity: 13-15 packs per min.



速度：45000-55000瓶/小时  
Capacity: 45000-55000 BPH  
Rotary pick and place packer

## >> 旋转式装箱

速度：15000-36000瓶/小时  
Capacity: 15000 - 36000 BPH  
Robotic Pick and Place Packer

## >> 机器人装箱



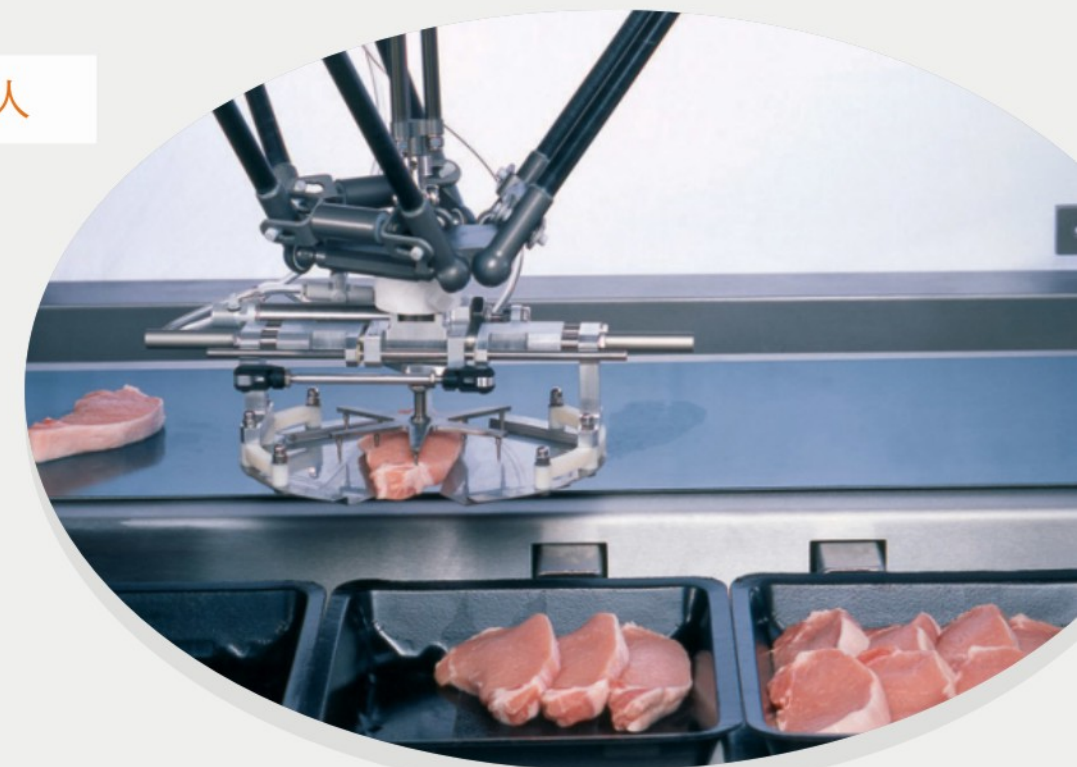
# >> 包装工业机器人 Sorting & Packing Robot



应用于码垛、分拣。  
Application in palletizer, sorting.

## >> DELTA3机器人

负载：1-3kg; 10m/s  
Payload:1-3kg; 10m/s



负载：25Kg; 25个节拍每分钟  
Payload:25kg

## >> DELTA2机器人

# >> 码/卸箱垛机 Palletizer



应用于啤酒、饮料、食品行业，码垛类型：码纸箱、塑箱、膜包。  
Application in beer, liquid and food industries. Type of palletizer: case, shrink and plastic.

## >> 龙门式高低位码垛机 Conventional palletizer

产能：900-40000瓶/小时  
Capacity: 900 - 40000 BPH



## >> 机器人码垛 Robotic Palletizer

码垛重量含抓手：100-200 (kg)  
码垛能力 (回/时)：800-1500  
Payload (with Gripper) 100-200kg  
Capacity: cycles/hr.: 800-1500



抓取机构：整层抓取、卷帘式  
抓手、抓钩式、移动平台整层  
过渡码放

Gripper: full layer gripper, rolling  
shutter, gripping hook, etc

## Single Column Robotic Palletizer

## >> 单立柱机器人



# >> 卸/瓶/罐/箱 垛机 Depalletizer



全自动卸瓶（罐）、卸箱系列适应高、低位，应用啤酒、饮料等行业。  
Automatic bulk bottle, bulk can and crate depalletiers, application in beer, liquid etc industries.

## >> 全自动卸瓶垛

Automatic Bulk Bottle Depalletizer

卸瓶速度：20000-60000瓶/小时  
Capacity: 20000-60000 BPH



卸罐速度：20000-60000瓶/小时  
Capacity: 20000-60000BPH

Automatic Bulk Can Depalletizer

## >> 全自动卸罐垛

卸垛速度：36000-48000瓶/小时  
Capacity: 36000-48000 BPH

Crate Depalletizer

## >> 卸箱垛系列



# >> 在线检测设备 Online Inspection



满瓶、空瓶检测系统应用于啤酒、饮料、药业等各类玻璃瓶的灌装厂、制瓶厂等提供全方位检测，以确保产品质量。

满箱检测应用于各行业的纸箱、膜包、塑箱等各种箱装、袋装检测，以确保二次包装的数量或重量。

Full bottle and empty bottle inspection system application in glass bottle inspecting of beer, liquid, pharmaceutical products etc industry.

Full case inspector application in all case, shrink and plastic packing industries.

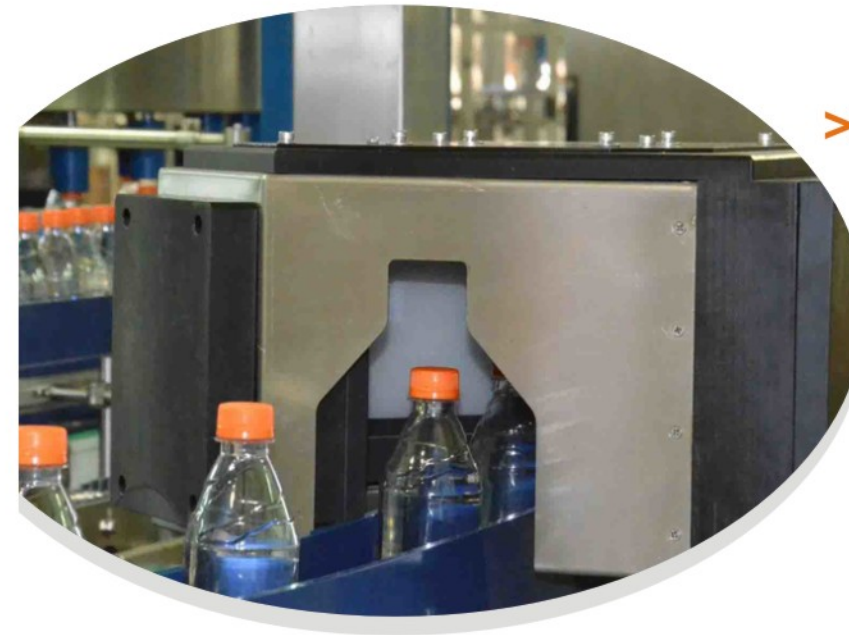
## >> 空瓶检测 Empty Bottle Inspection

应用范围：瓶口、瓶底、瓶壁、残液全方位

检测速度：60000瓶/小时

Inspection Scope: bottle breakage, residual liquid etc.

Capacity: 60000 BPH



## >> 满瓶检测 Full Bottle Inspection

应用范围：

液位、高盖、歪盖、断桥、缺环、无盖、喷码

检测速度：24000-36000瓶/小时

Inspection Scope:

Cap integrity, cap coding etc.

Capacity: 24000-36000 BPH

应用范围容器缺漏、记录生产情况、剔缺陷箱子

检测速度：40-60瓶/小时

Container missing detection, production records, remove defects case

Capacity: 40-60 BPH



## >> 满箱检测 (称重式) Full Case Inspector

# >> 生产线输送系统 Conveying System



饮料生产线的输送设备，包括：瓶胚的输送、瓶盖的输送、空瓶的输送、实瓶的输送、后段包装物的输送等。

Conveying equipment of liquid production line, include: performs, cap, empty bottle, full bottle and back-end products conveying.

## >> WD 8100无压力缓冲堆积平台 WD 8100 pressureless buffer table

无压力堆积平台可用在最高速度的生产线上;  
增强生产线的性能:平衡容器从一台设备到另一台设备之间的流量,消除生产线上压力;  
按照顺序先进/先出的堆积、缓冲:改善产品质量,减少容器破损和标签损坏,消除压力;  
极低的维护,消除生产线上复杂的控制,单侧进瓶单侧出瓶。  
Pressureless buffer table can be used in high speed production line.  
Enhance production performance: balance the bottle flow between two equipments, Eliminate pressure for production line.  
According to order of buffer, accumulation: improve quality of product, decrease damage of bottle and label, eliminate pressure.  
Less maintenance, eliminate the complex control in production line, bottles one side in and one side out.



从多排到单排瓶输瓶机只有一边护栏;;  
由最先进的程序控制器和变频器全自动调速来完成;  
若有倒瓶能自动进入接瓶斗而不会卡瓶堵瓶。  
There is one side guardrail of bottle conveyer and the bottle conveying way is from rows to single row.  
By the most advanced programming controller and frequency changer to complete.  
If bottle falling, the system will automaticly transport the bottles into a silo prevent bottle blocking and jamming.

## >> 无压力输送系统 Pressureless conveying system

操作简单,无需任何气动动作;  
输送护栏的单点调整包括弯道在内;  
顶部和底部的护栏可以单独调整;  
宽度/高度调整,或两者相结合调整,可根据客户任一瓶型尺寸和生产线要求量身定做;  
可以通过步进电机,伺服电机和PLC来进行手动或者自动调整。

Simple operation, without any pneumatic action  
Single point adjustment of conveyor guide rails including corners.  
Top and bottom rails can be adjusted independently  
Width adjustments, height adjustments, or a combination of the two Custom designed for any container shape or size and line configuration.  
Adjusts manually or automatically through stepper motors, servo motors and P.L.C' s.



## >> 可调节护栏Adjustable guide rails



# >> 卓越品质 Excellent Quality

## 研发管理Research and development management:

建有“广东省企业技术中心”，由150名专家级工程师组成研发团队，致力于新产品开发、产品升级革新、新材料应用和探索新型生产方式；拥有1000平方米的专业自动化实验室、包装机械技术中心、包装检测技术中心、包装工业机器人技术中心、可测试控系统、检测系统、包装系统、机械手和物流系统；团队总工程师尹立龙荣获“全国机械工业劳动模范”；电气副总工程师荣获“全国五一劳动奖章”。

It built Guangdong provincial enterprise technology centers. The research and development team consists of 150 members of expert engineers. This team tries to develop and upgrade some new products. In addition, this team intends to use new materials and explore the new mode of production. It owns 1000 square meters of specialized automated laboratory, packaging machinery technology center, detection Technology Center for packaging machine. It could test control system, testing system, packaging system and logistics system.

## 制造加工Manufacturing and processing:

拥有国际一流的超精密加工设备，200多台加工设备、30多台高精度数控机床、180位专业操作技工、超过30位工艺技术人员，在尖端机械制造，零部件加工、微结构及数字化柔性加工等技术方面，已跻身国际前列，并填补国内多项空白。

It has the international first-class processing equipment. It has more than 200 processing equipments and 180 professional technical workers.

## 检测中心Inspection center:

三坐标测量机、HR-150洛氏硬度计、Pioneer600I高度测量仪、红外线测温仪、数字投影仪和六通高速元素分析等

CMM, HR.150 Rockwell Apparatus, pioneer600 Height measuring instrument, Height measuring instrument, Digital projector, element analysis.

## 顶级合作供应商Top-level supplier:

SEW、ABB、龙玥电气、诺信测控、若恒工控、KUKA  
SEW、ABB、LOKSHUN、LONGYUE、RUOHENG、KUKA

## 国际标准化质量管理International standard quality management:

ISO9001质量管理体系认证、欧盟CE认证、二级计量保证体系认证、广东省标准化良好行为4A企业。

ISO9001 quality management system certification, EU CE certification, Secondary measurement assurance system certification, Guangdong standardization 4A Company.

## 环境保护管理Environment conservation management:

ISO14001环境管理体系认证、ISO18001职业健康安全管理体系认证

ISO14001 environment management system certification; ISO18001 health and safety management system certification.



# >> 我们的荣誉 Our Honor



- 《装箱机》国家标准第一起草单位
- 高新技术企业
- 广东省著名商标
- 广东省名牌产品
- 广东省企业技术中心
- 国家火炬计划项目单位
- 广东省省知识产权优势企业
- First draft of nation standard unit of case packer
- High technology enterprise
- Guangdong famous brand
- Guangdong top-brand product
- Guangdong enterprise technology center
- National torch plan project unit
- Guangdong top intellectual property unit



# >> 专业服务 Professional Service

全球服务热线：400-0086-020  
Global service hotline: 400-0086-020

- |                 |  |
|-----------------|--|
| ● 服务合同          | ● Professional Service contract                  |
| ● 七天24小时客服支持    | ● 24 hours service support                       |
| ● 提供直接或远程故障诊断   | ● Provide direct or remote fault diagnosis       |
| ● 快速反应以减少停机时间   | ● Rapid response to reduce downtime              |
| ● CRM及时跟踪客户历史服务 | ● CRM Tracking customer service in time          |
| ● 在线远程或现场为你培训课程 | ● Remote or on-site to provide training services |
| ● 更新和改进设备服务     | ● Update and improve device service              |
| ● 备件服务，备件采购迅速出货 | ● Spare parts service                            |



# >> 我们的客户 Our Clients



低碳高效 万世德造

Low Carbon, High Efficiency  
Vanta Manufactures

今天，万世德已经成为全国最具知名度和影响力的液态产品包装解决方案提供商之一。我们将低碳高效、绿色环保的理念融入产品的研发、设计、制造之中，不断提升用户体验，为用户创造更多价值。

Today, vanta is one of most well know and influential company offering liquid packaging solution in China. We integrate low carbon, high efficiency, green and environment friendliness into R & D, designing and manufacturing our products in order to improve user's experience and create more value for our customers.

